

Fixing the “Your version of RMS, x.x.x is out of date.” Message in RMS

The most recent version of RMS available to customers of Ineo is version 4.6.1. Due to beta testing in some sites, including Ineo offices, every now and then, the database will get updated and will think that the latest version available is 4.6.6.

Users of RMS may receive the following message when logging into the system, if this is the case:



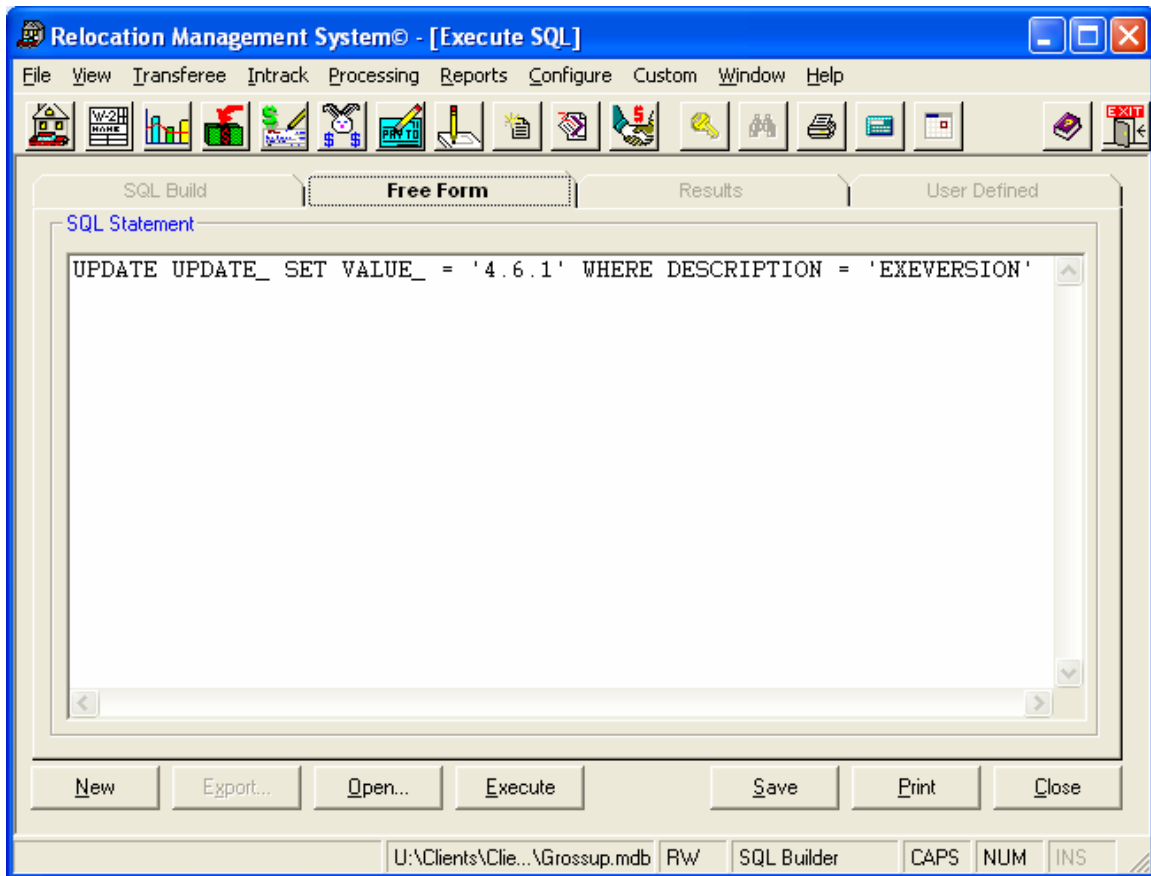
This message is completely harmless and will not cause any problems with the RMS system, however it may become a nuisance.

To eliminate the message:

- 1) Log into RMS as the ADMIN user (in most cases, the password will also be ADMIN) and click OK when you receive the above message.
- 2) Click on the *Reports* menu, then on *Execute SQL – Filter Lists* option.
- 3) Click on the *Free Form* Tab, then click once in the blank white space provided for SQL statements
- 4) Type the following statement into the window:

```
UPDATE UPDATE_ SET VALUE_ = '4.6.1' WHERE  
DESCRIPTION = 'EXEVERSION'
```

- 5) Click the *Execute* button.



If all goes well, the system will switch to the *Results* tab and you will see a message saying that the “Query Completed Successfully.”

If you have any other questions regarding this issue, please call Ineo at 303.308.1801 and ask for RMS support.